

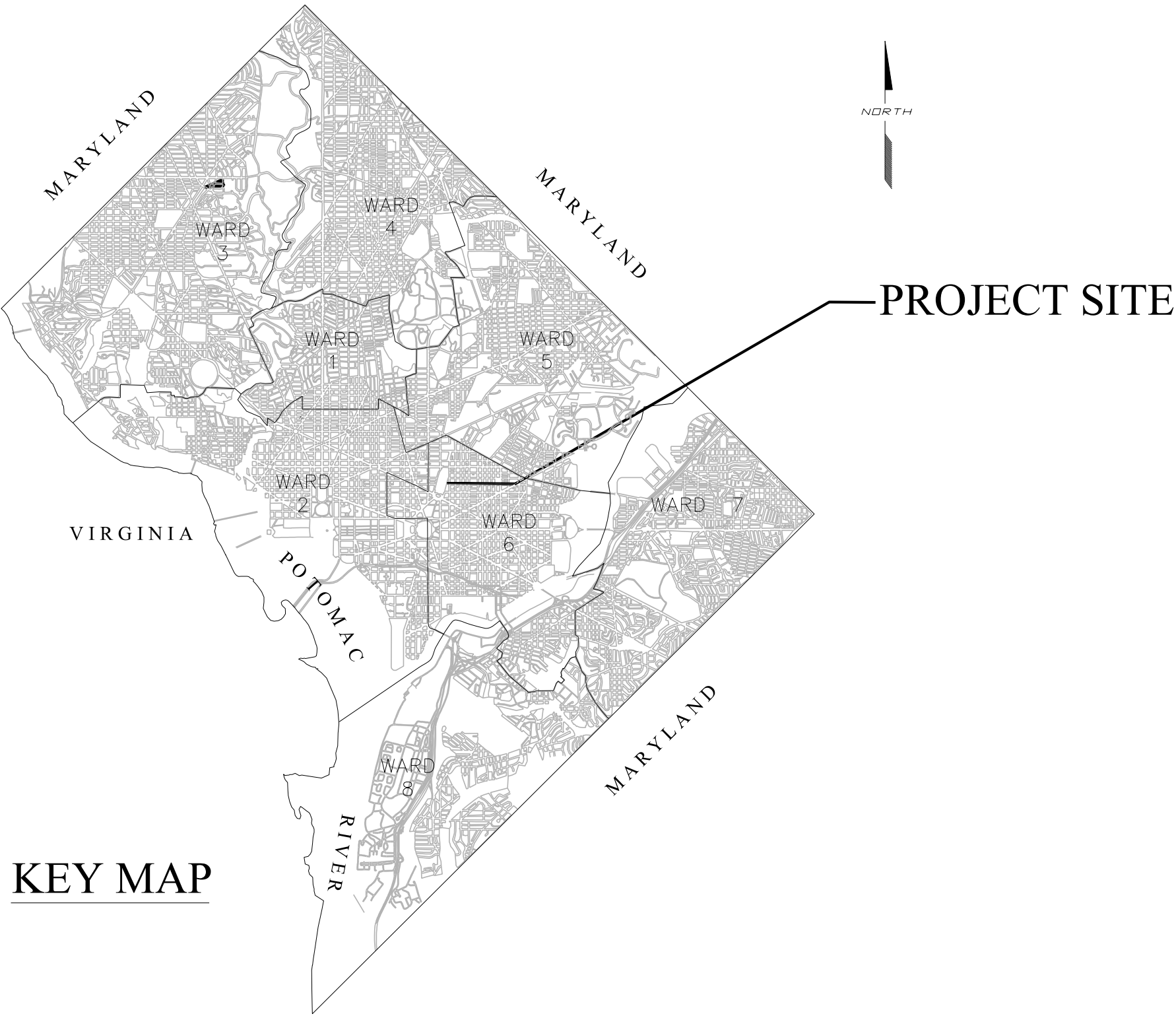
REG.	STATE	PROJECT	SHEET NO.	TOTAL SHEETS
2	D.C.	N/A	001	011

DISTRICT OF COLUMBIA

DEPARTMENT OF TRANSPORTATION

PLANS OF

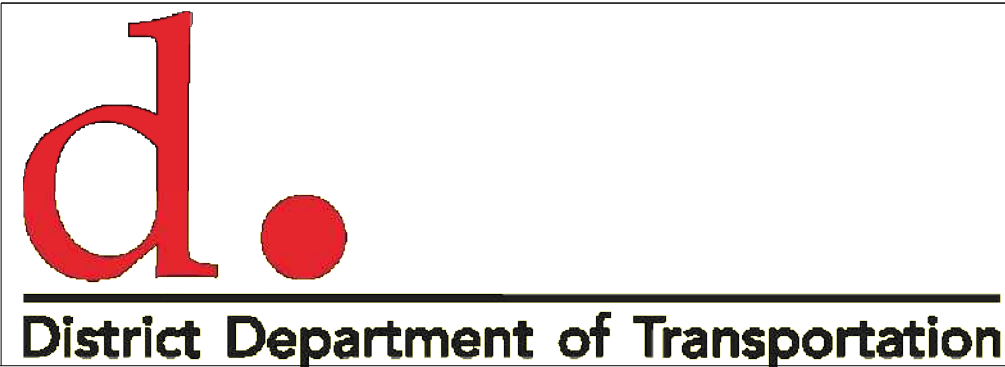
G Street, N.E. Contraflow Bicycle Lane



KEY MAP

LENGTH OF PROJECT = 4,750 FT = 0.90 MILES

90% SUBMITTAL: NOVEMBER, 2013  
NOT FOR CONSTRUCTION



DISTRICT OF COLUMBIA DEPARTMENT OF TRANSPORTATION	DEPT. OF TRANSPORTATION FEDERAL HIGHWAY ADMINISTRATION
RECOMMENDED FOR APPROVAL:  PROGRAM MANAGER IPMA / CHIEF, IPMA SUPPORT DIVISION APPROVED:  CHIEF TRANSPORTATION ENGINEER  POLICY, PLANNING AND SUSTAINABILITY ADMINISTRATION  TRAFFIC OPERATIONS ADMINISTRATION DATE: _____	APPROVED:    DIVISION ADMINISTRATOR    DATE: _____

## SIGN QUANTITIES

G Street Sign Quantities								
Quantity	Sign Designation	MUTCD/Custom	Sign Type	Use	Sign or Plaque Description	Panel Dimensions (Inches)		Panel Area
						W	H	
20	W11-1	MUTCD	Warning	Traffic	Bike Symbol	30	30	6.25
18	W1-7	MUTCD	Warning	Traffic	Two Direction Arrow	24	12	2
1	R6-1L	MUTCD	Regulatory	Traffic	One Way, Left Arrow	36	12	3
12	R1-1	MUTCD	Regulatory	Bicycle Facilities	Stop	18	18	2
11	R1-4	MUTCD	Regulatory	Bicycle Facilities	All Way	18	6	0.75
12	R1-4 (MOD)	MUTCD	Regulatory	Bicycle Facilities	Bikes	18	6	0.75
1	R7-1	MUTCD	Regulatory	Parking	No Parking, Left Arrow	12	18	1.5
1	R7-2	MUTCD	Regulatory	Parking	RPP Zone 6	12	18	1.5
4	CUSTOM	Custom	Regulatory	Bicycle Facilities	Except Bicycles	24	12	2
2	CUSTOM	Custom	Warning	Bicycle Facilities	Two Way	18	18	2.25

<b>Total New Signs:</b>	<b>82</b>
<b>Total Square Footage Signs:</b>	<b>215</b>
<b>New Poles</b>	<b>16</b>

**90% SUBMISSION: NOVEMBER, 2013**

D.C. DEPARTMENT OF TRANSPORTATION  
POLICY, PLANNING, AND SUSTAINABILITY ADMINISTRATION  
BICYCLE AND PEDESTRIAN PROGRAM

G ST, N.E. BICYCLE LANE PROJECT  
FROM 2ND ST, N.E.  
TO MARYLAND AVE, N.E.

PROJECT ENG. GPY  
DESIGNED BY GPY  
CHECKED BY MJG  
DRAWN BY GPY  
PROJECT MGR. MJG

DIVISION CHIEF

DETAIL SHEET - 1

DATE 11/26/13

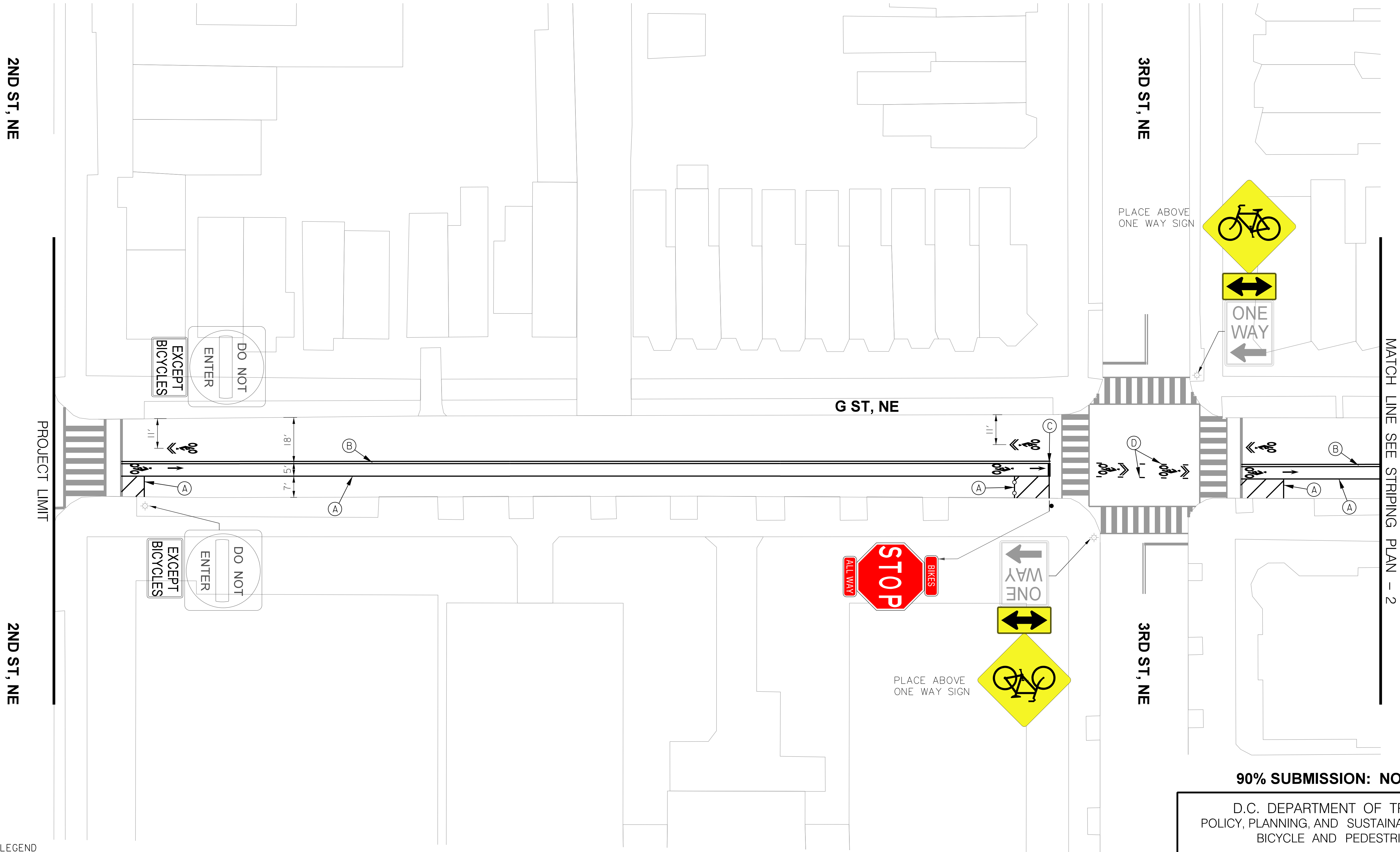
FILE \_\_\_\_\_

SHEET 2 OF 11



NO.	DESCRIPTION	NAME	DATE
REVISIONS			

REG	STATE	PROJECT	SHEET NO.	TOTAL SHEETS
2	D.C.	N / A	3	11



PAVEMENT MARKING LEGEND

- (A) 4" SOLID WHITE REFLECTIVE THERMOPLASTIC PAVEMENT MARKING LINE
- (B) 4" YELLOW THERMOPLASTIC PAVEMENT MARKING - SOLID DOUBLE STRIPE
- (C) 12" SOLID WHITE REFLECTIVE THERMOPLASTIC PAVEMENT MARKING LINE
- (D) 4" WHITE REFLECTIVE THERMOPLASTIC PAVEMENT MARKING (2' STRIPE/4' GAP/2' STRIPE)
- (E) 6" SOLID WHITE REFLECTIVE THERMOPLASTIC PAVEMENT MARKING LINE
- (F) 6" SOLID WHITE REFLECTIVE THERMOPLASTIC PAVEMENT MARKING LINE ALIGNED WITH NO PARKING SIGN



NO.	DESCRIPTION	NAME	DATE
REVISIONS			

90% SUBMISSION: NOVEMBER, 2013

D.C. DEPARTMENT OF TRANSPORTATION POLICY, PLANNING, AND SUSTAINABILITY ADMINISTRATION BICYCLE AND PEDESTRIAN PROGRAM	
G ST, N.E. BICYCLE LANE PROJECT FROM 2ND ST, N.E. TO MARYLAND AVE, N.E.	PROJECT ENG. ____ GPY ____ DESIGNED BY ____ GPY ____ CHECKED BY ____ MJG ____ DRAWN BY ____ GPY ____ PROJECT MGR. ____ MJG ____
STRIPING AND SIGNING PLAN - 1	DIVISION CHIEF DATE ____ 11/26/13 ____ FILE ____ SHEET 3 OF 11



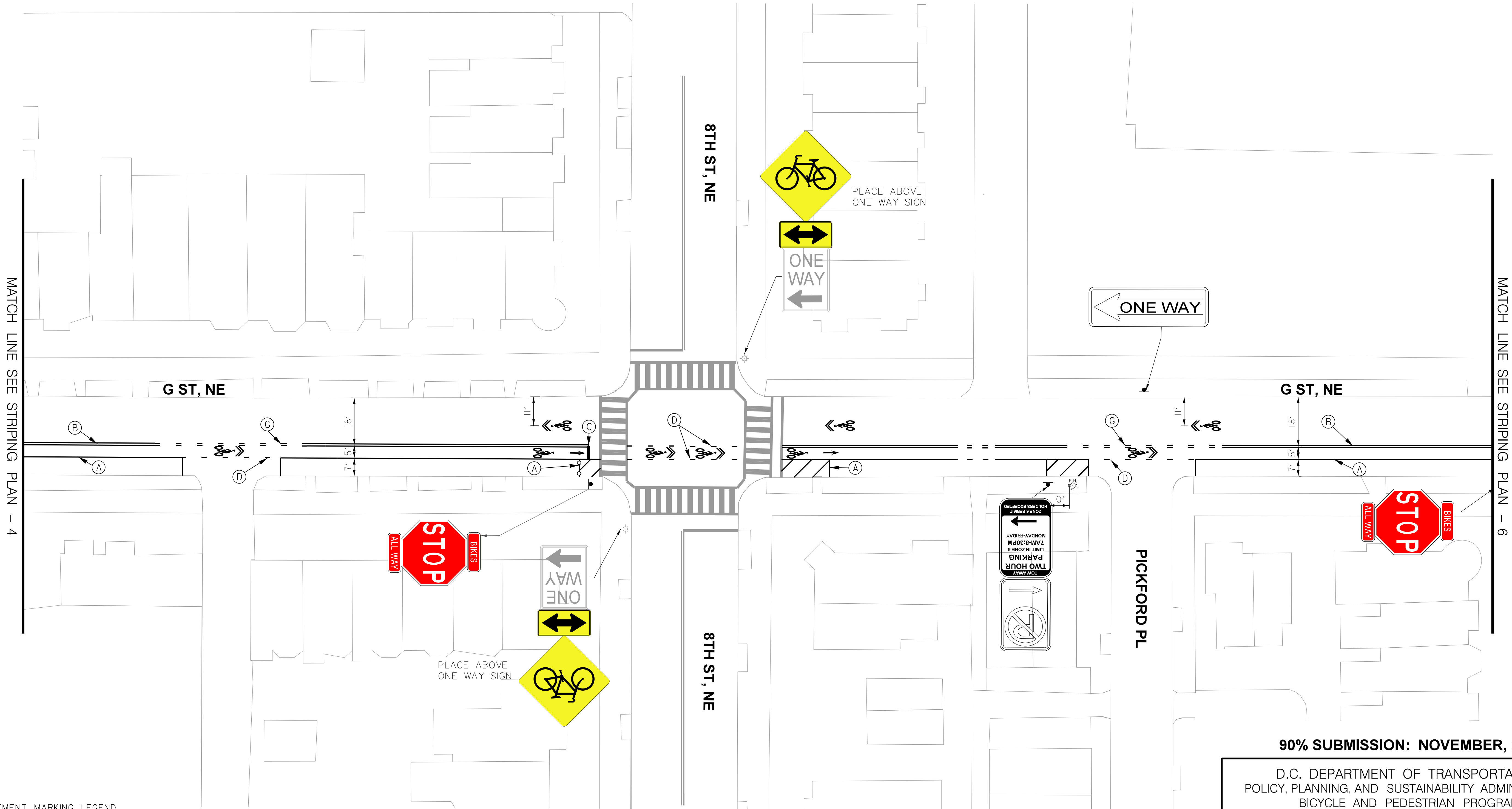








REG	STATE	PROJECT	SHEET NO.	TOTAL SHEETS
2	D.C.	N / A	7	11



PAVEMENT MARKING LEGEND

- (A) 4" SOLID WHITE REFLECTIVE THERMOPLASTIC PAVEMENT MARKING LINE
- (B) 4" YELLOW THERMOPLASTIC PAVEMENT MARKING - SOLID DOUBLE STRIPE
- (C) 12" SOLID WHITE REFLECTIVE THERMOPLASTIC PAVEMENT MARKING LINE
- (D) 4" WHITE REFLECTIVE THERMOPLASTIC PAVEMENT MARKING (2' STRIPE/4' GAP/2' STRIPE)
- (E) 6" SOLID WHITE REFLECTIVE THERMOPLASTIC PAVEMENT MARKING LINE
- (F) 6" SOLID WHITE REFLECTIVE THERMOPLASTIC PAVEMENT MARKING LINE ALIGNED WITH NO PARKING SIGN
- (G) 4" YELLOW THERMOPLASTIC PAVEMENT MARKING - DOUBLE DASHED (2' STRIPE/4' GAP/2' STRIPE)



NO.	DESCRIPTION	NAME	DATE
REVISIONS			

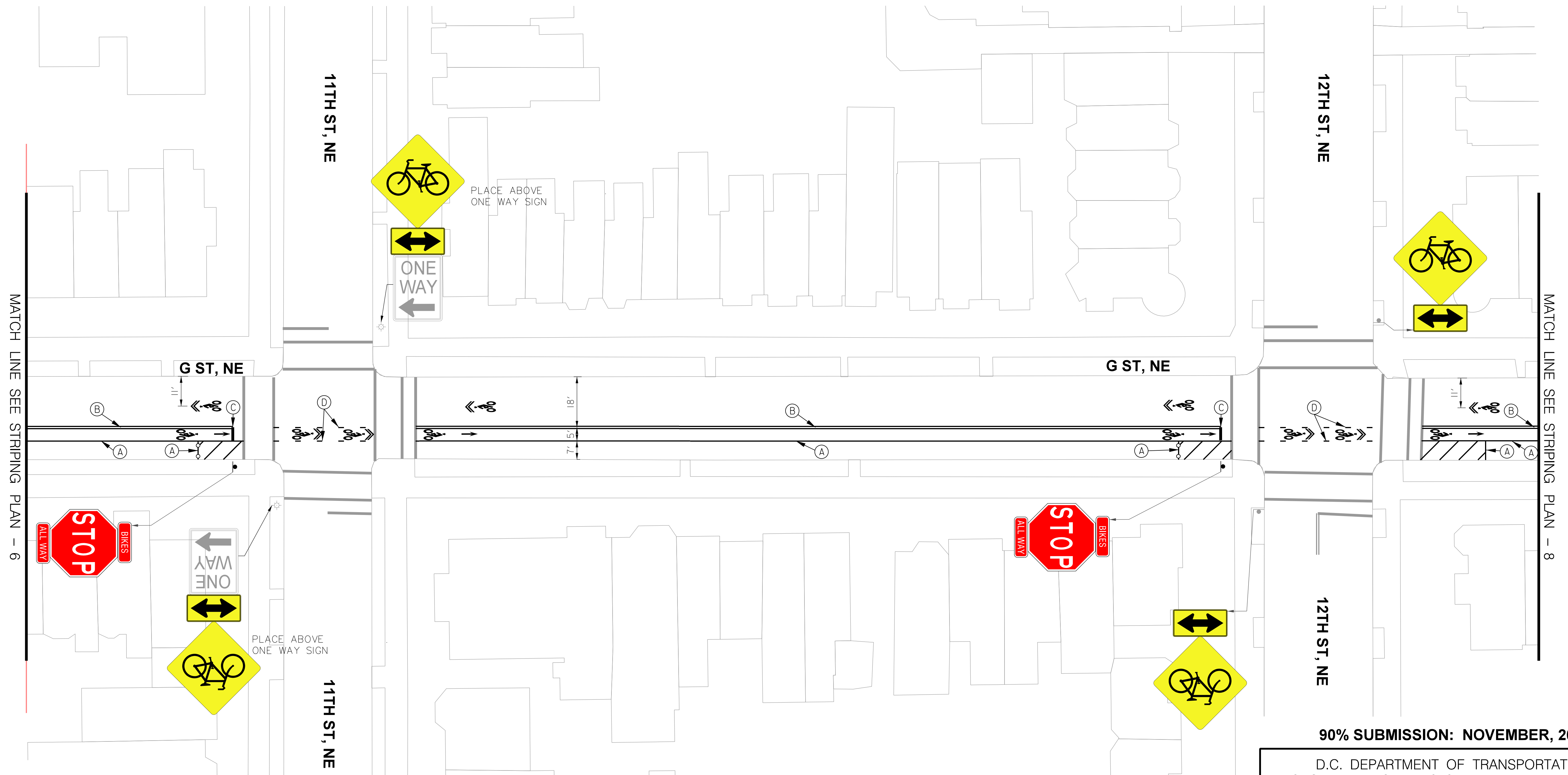
90% SUBMISSION: NOVEMBER, 2013

D.C. DEPARTMENT OF TRANSPORTATION POLICY, PLANNING, AND SUSTAINABILITY ADMINISTRATION BICYCLE AND PEDESTRIAN PROGRAM	
G ST, N.E. BICYCLE LANE PROJECT FROM 2ND ST, N.E. TO MARYLAND AVE, N.E.	PROJECT ENG. _____ GPY DESIGNED BY _____ GPY CHECKED BY _____ MJG DRAWN BY _____ GPY PROJECT MGR. _____ MJG
STRIPING AND SIGNING PLAN – 5	DIVISION CHIEF DATE 11/26/13 FILE SHEET 7 OF 11





REG	STATE	PROJECT	SHEET NO.	TOTAL SHEETS
2	D.C.	N / A	9	11



### PAVEMENT MARKING LEGEND

- |     |  |
|-----|--|
| (A) | 4" SOLID WHITE REFLECTIVE THERMOPLASTIC PAVEMENT MARKING LINE                              |
| (B) | 4" YELLOW THERMOPLASTIC PAVEMENT MARKING - SOLID DOUBLE STRIPE                             |
| (C) | 12" SOLID WHITE REFLECTIVE THERMOPLASTIC PAVEMENT MARKING LINE                             |
| (D) | 4" WHITE REFLECTIVE THERMOPLASTIC PAVEMENT MARKING (2' STRIPE/4' GAP/2' STRIPE)            |
| (E) | 6" SOLID WHITE REFLECTIVE THERMOPLASTIC PAVEMENT MARKING LINE                              |
| (F) | 6" SOLID WHITE REFLECTIVE THERMOPLASTIC PAVEMENT MARKING LINE ALIGNED WITH NO PARKING SIGN |



NO.	DESCRIPTION	NAME	DATE
<b>REVISIONS</b>			

**90% SUBMISSION: NOVEMBER, 2013**

D.C. DEPARTMENT OF TRANSPORTATION  
POLICY, PLANNING, AND SUSTAINABILITY ADMINISTRATION  
BICYCLE AND PEDESTRIAN PROGRAM

G ST, N.E. BICYCLE LANE PROJECT  
FROM 2ND ST, N.E.  
TO MARYLAND AVE, N.E.

STRIPING AND SIGNING PLAN - 7

PROJECT ENG. GPY  
DESIGNED BY GPY  
CHECKED BY MJG  
DRAWN BY GPY  
PROJECT MGR. MJG

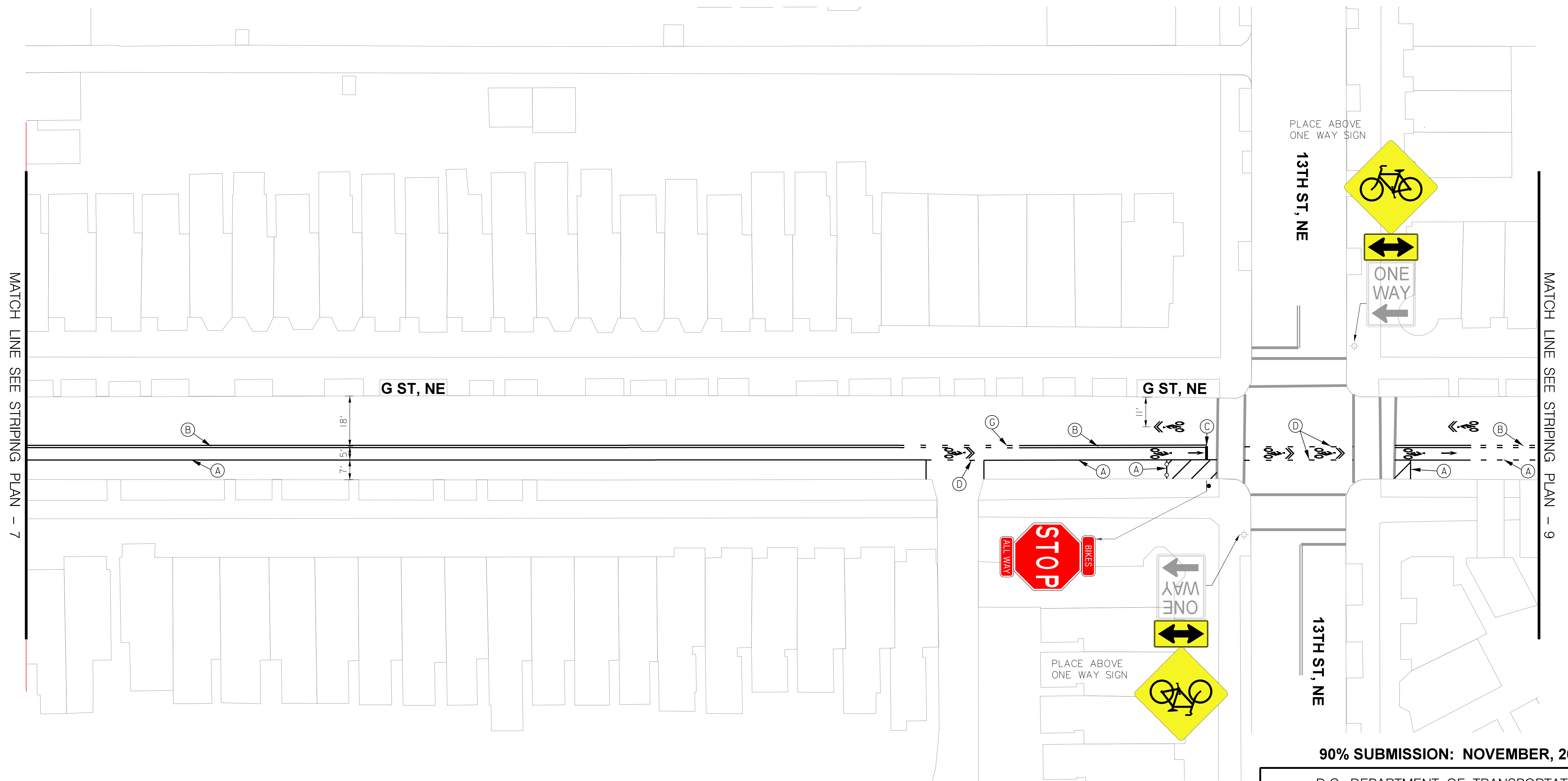
VISION CHIEF

DATE 11/26/13

FILE \_\_\_\_\_

SHEET 9 OF 11

REG	STATE	PROJECT	SHEET NO.	TOTAL SHEETS
2	D.C.	N / A	10	11



### PAVEMENT MARKING LEGEND

- |     |  |
|-----|--|
| (A) | 4" SOLID WHITE REFLECTIVE THERMOPLASTIC PAVEMENT MARKING LINE                              |
| (B) | 4" YELLOW THERMOPLASTIC PAVEMENT MARKING - SOLID DOUBLE STRIPE                             |
| (C) | 12" SOLID WHITE REFLECTIVE THERMOPLASTIC PAVEMENT MARKING LINE                             |
| (D) | 4" WHITE REFLECTIVE THERMOPLASTIC PAVEMENT MARKING (2' STRIPE/4' GAP/2' STRIPE)            |
| (E) | 6" SOLID WHITE REFLECTIVE THERMOPLASTIC PAVEMENT MARKING LINE                              |
| (F) | 6" SOLID WHITE REFLECTIVE THERMOPLASTIC PAVEMENT MARKING LINE ALIGNED WITH NO PARKING SIGN |



NO.	DESCRIPTION	NAME	DATE
REVISIONS			

**90% SUBMISSION: NOVEMBER, 2013**

D.C. DEPARTMENT OF TRANSPORTATION  
POLICY, PLANNING, AND SUSTAINABILITY ADMINISTRATION  
BICYCLE AND PEDESTRIAN PROGRAM

G ST, N.E. BICYCLE LANE PROJECT  
FROM 2ND ST, N.E.  
TO MARYLAND AVE, N.E.

PROJECT ENG. GPY  
DESIGNED BY GPY  
CHECKED BY MJG  
DRAWN BY GPY  
PROJECT MGR. MJG

DIVISION CHIEF

STRIPING AND SIGNING PLAN - 8

DATE 11/26/13  
FILE \_\_\_\_\_  
SHEET 10 OF 11

