

Pennsylvania Avenue SE, Potomac Avenue SE, and 14th Street SE

Transportation Improvements

Public Scoping Meeting

January 31, 2013

WELCOME



Agenda

- Purpose of Meeting
- Project Background
- Purpose and Need
- National Environmental Policy Act (NEPA)
- National Historic Preservation Act (NHPA)
- Public Involvement Opportunities
- Concepts
- Next Steps
- Question and Answer Session

A dark blue wavy line that spans the width of the slide, separating the top dark blue header area from the white content area.

PROJECT BACKGROUND

Project Background

- Project Discussed in:
 - Middle Anacostia Crossings (MAC) Study, Mid-Term Improvements (Project 14), 2005
 - Capitol Hill Transportation Study, 2006
 - District of Columbia Comprehensive Plan (2006)
 - Pennsylvania Avenue SE Corridor Land Development Plan, 2008
- DDOT Initiated an Environmental Assessment in April 2009 that was subsequently put on hold

A dark blue wavy line that spans the width of the image, separating the top dark blue section from the bottom light blue section.

PURPOSE AND NEED

Why Is DDOT Evaluating This Intersection?

- The Pennsylvania Avenue SE, Potomac Avenue SE, and 14th Street SE intersection has multiple striped crosswalk locations that create pedestrian and driver confusion and conflict points
- Current striped crosswalks provide indirect means to cross Pennsylvania Avenue SE
- Pedestrians have created a more direct path through the grassed median of Pennsylvania Avenue SE. This path is not striped and not included in the pedestrian signal timing

The Needs for the Project Are:

- Enhance pedestrian safety for residents and multi-modal transit users traveling in and around the Pennsylvania Avenue SE, Potomac Avenue SE, and 14th Street SE intersection
- Meet District of Columbia Comprehensive Plan Transportation Planning Elements and Policies investing in Pedestrian Connections as a means to enhance multi-modal use
- Align with Regional and District transportation planning policies to reduce reliance on the automobile through investment at transit centers



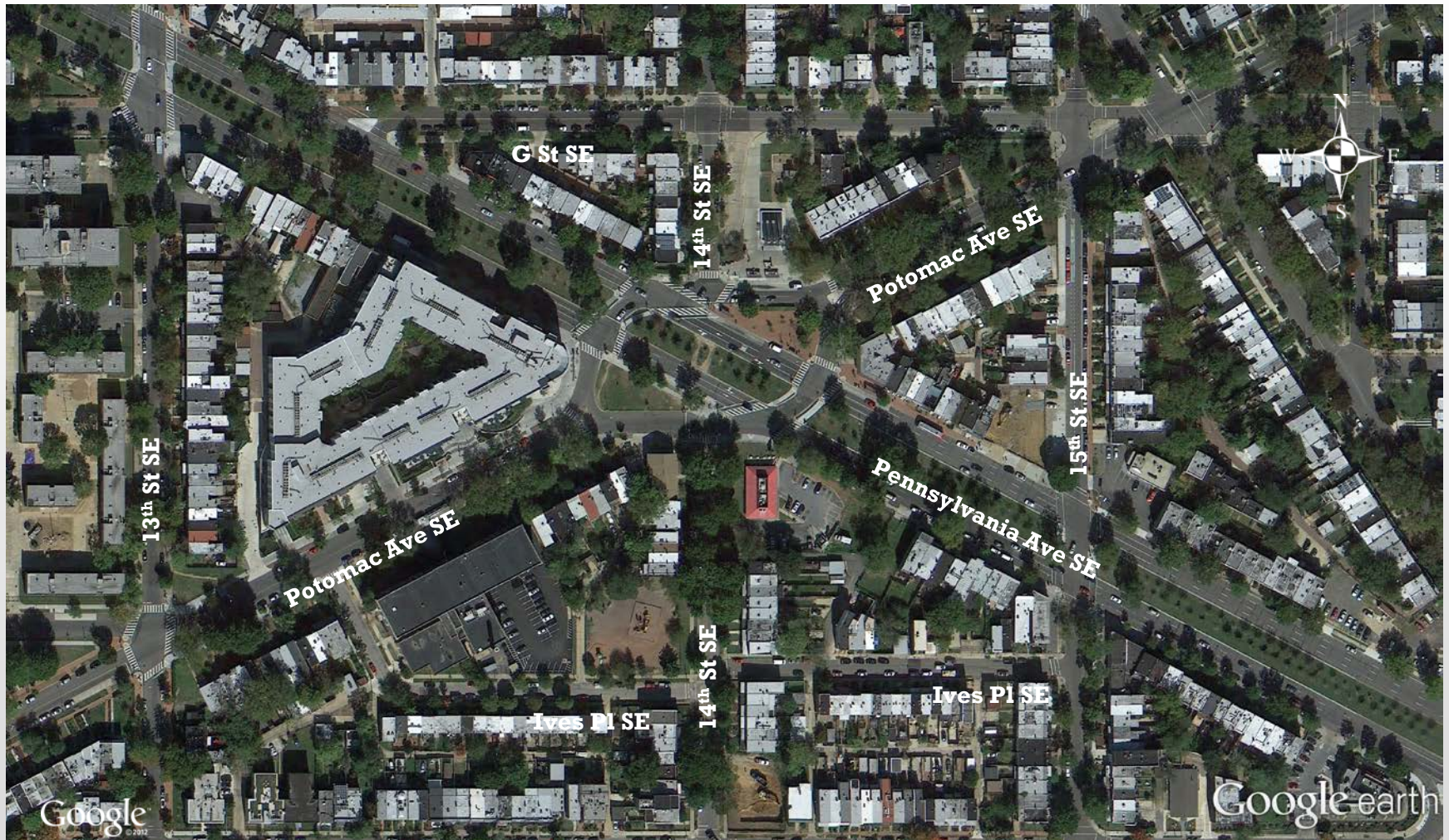
NATIONAL ENVIRONMENTAL POLICY ACT (NEPA)

National Environmental Policy Act (NEPA) Environmental Assessment

- Federal Highway Administration is the lead federal agency for the Transportation NEPA process



NEPA Project Study Area



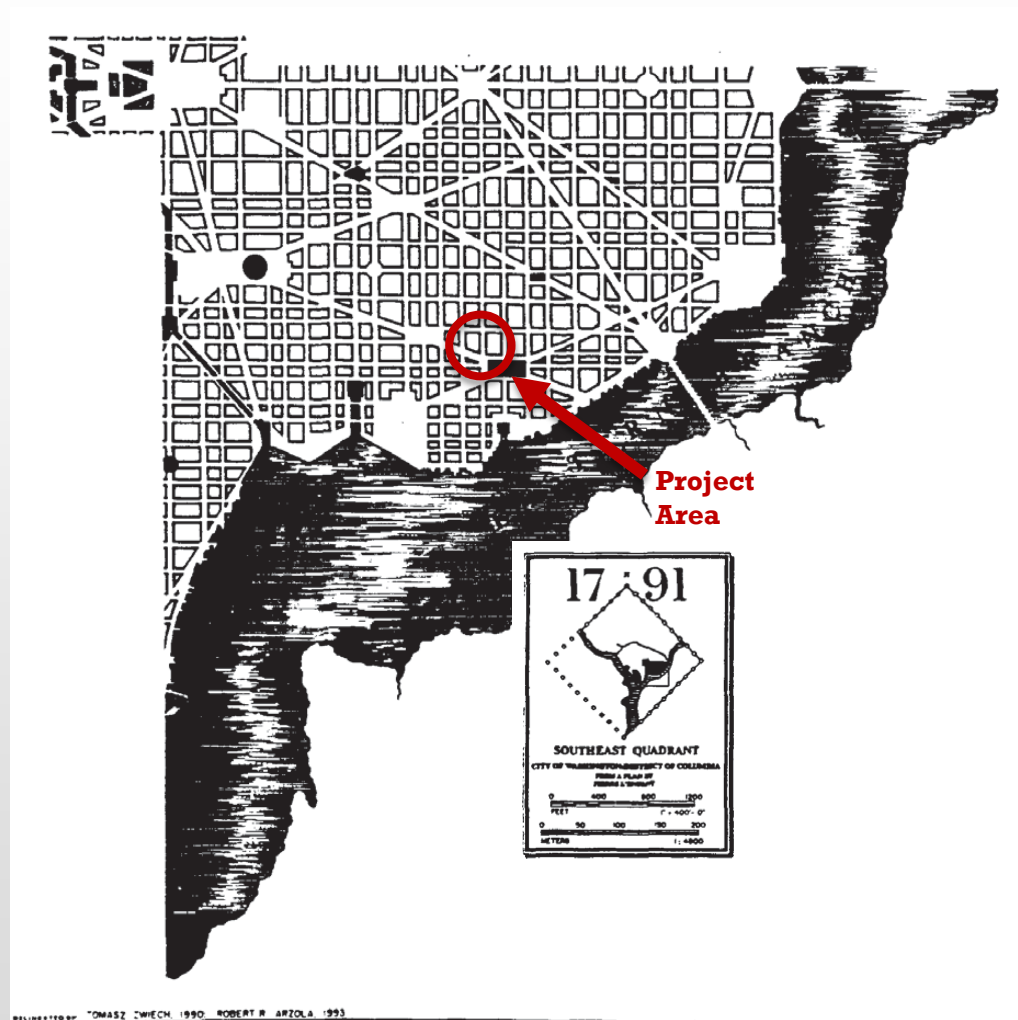
A dark blue, wavy graphic element that spans the width of the slide, resembling a stylized horizon or a piece of fabric, positioned at the top of the image.

NATIONAL HISTORIC PRESERVATION ACT (NHPA)

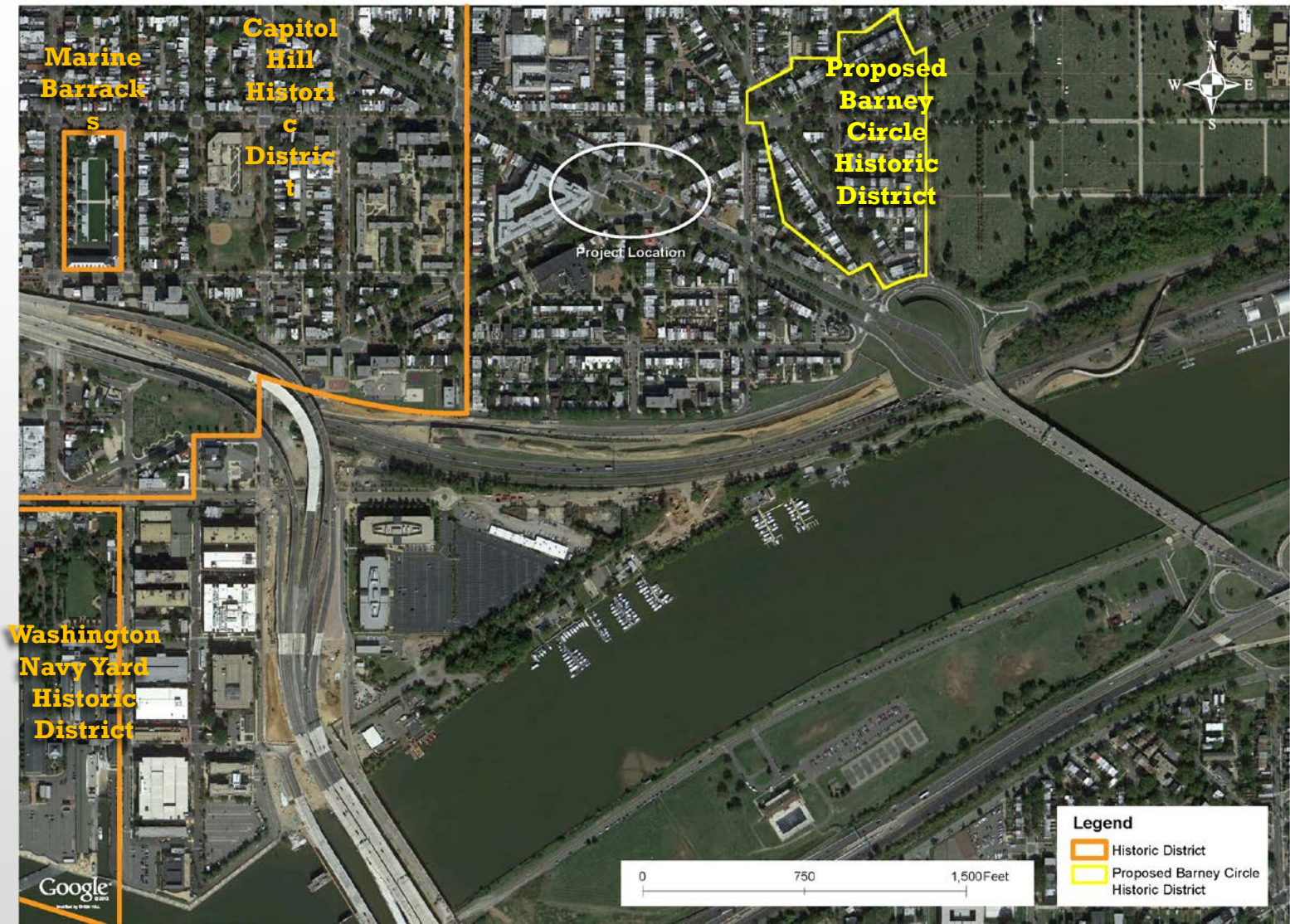
National Historic Preservation Act (NHPA)

- Section 106 of the NHPA requires consultation with the State Historic Preservation Office and other interested parties
 - Historic properties will be defined
 - Identified historic properties include:
 - The L'Enfant Plan of the City of Washington
 - Capitol Hill Historic District
 - Proposed Barney Circle Historic District
- An Assessment of Effects on historic properties from the Transportation Improvements will be prepared and summarized in the Environmental Assessment
- ***Interested parties are invited to participate***

L'Enfant Plan of the City of Washington



Cultural Resources



A dark blue wavy line that spans the width of the slide, separating the top dark blue header area from the bottom light blue area.

PUBLIC INVOLVEMENT

Public Involvement

- Public Meetings
 - Public Meeting #1
 - Scoping and Purpose and Need – Tonight
 - Public Meeting #2
 - Alternatives Review – Spring 2013
 - Public Meeting #3
 - Public Hearing on EA – Summer 2013

Stakeholders

- Residents and Business Owners in Project Area
- Transit Riders, Bicyclists
- Advisory Neighborhood Commission
- Federal Highway Administration
- National Park Service
- DC-State Historic Preservation Office
- National Capitol Planning Commission
- Commission of Fine Arts
- Washington Metropolitan Area Transit Authority

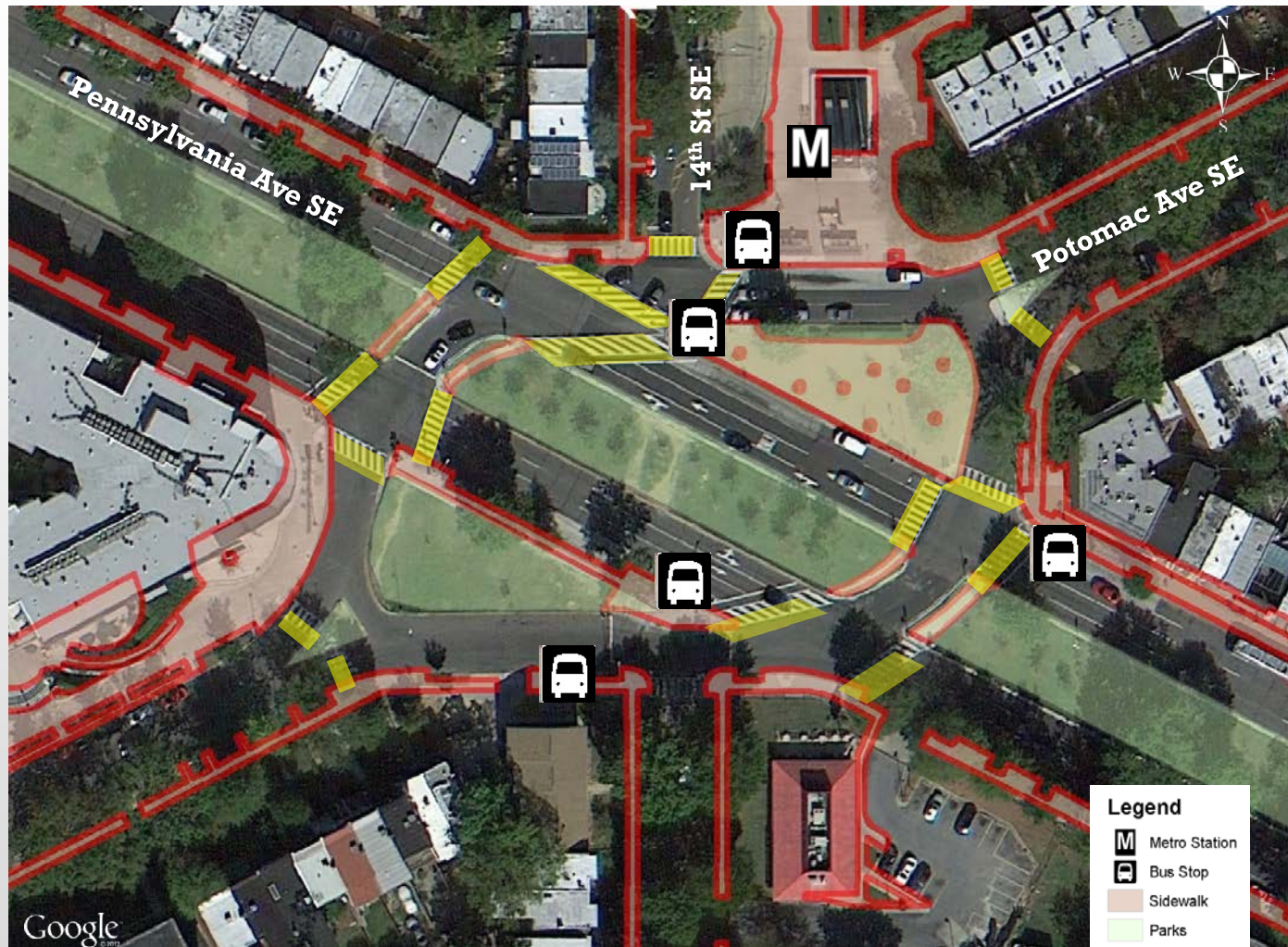


CONCEPTS

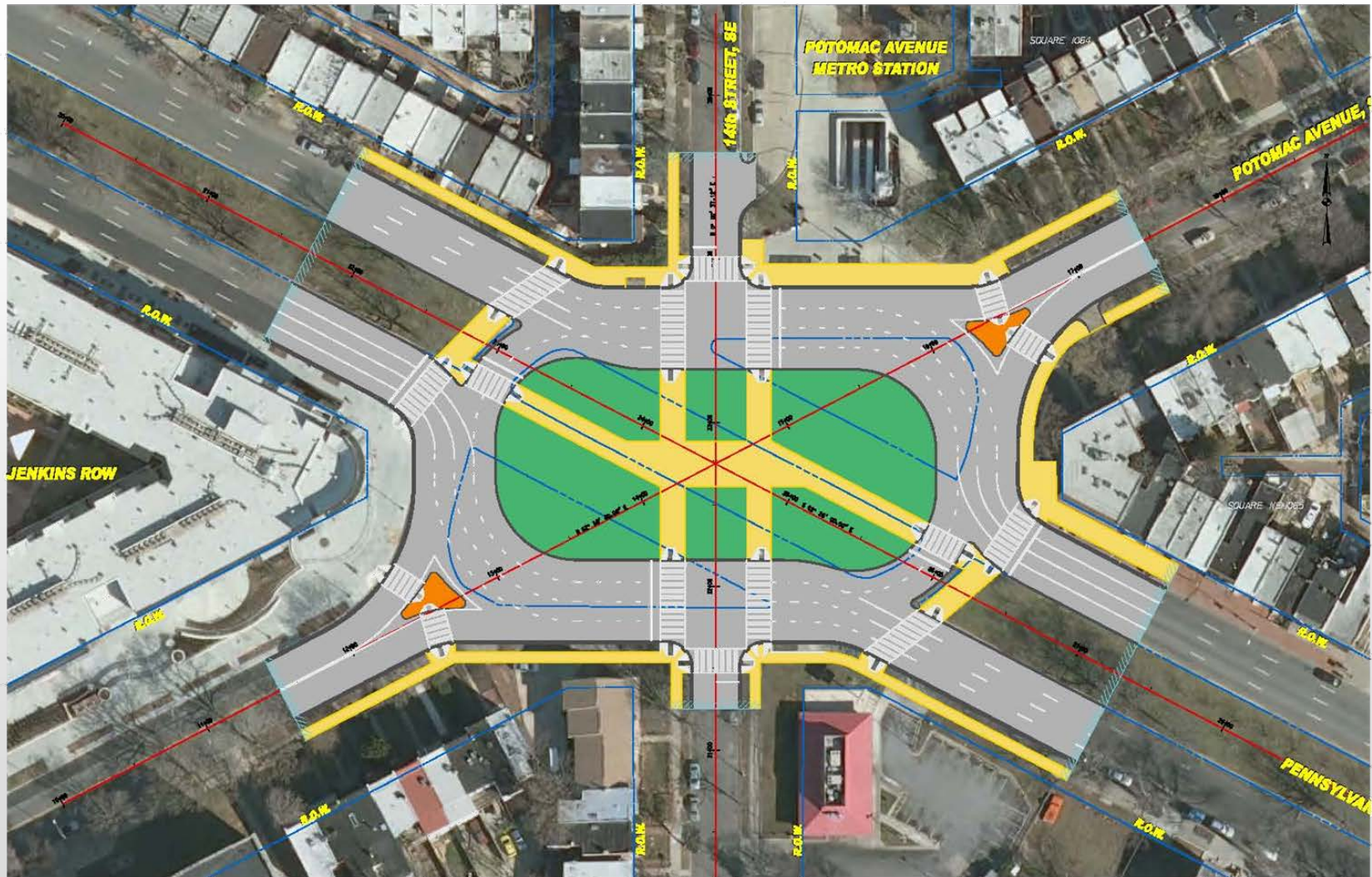
Potential Concepts

- Improvements to pedestrian crosswalks
- Traffic signal coordination
- Modification to the approach roadways – Potomac Avenue, SE and 14th Street, SE
- Redesign and reconfiguration of entire intersection

Existing Conditions



Previously Developed Concept



Concept 1 T-Intersections



Concept 2 Signalized Oval



A thick, dark blue wavy line that spans the width of the slide, separating the top blue header area from the bottom white content area.

NEXT STEPS

Project Schedule

Milestone	Date
Public Meeting #1 – Public Scoping Meeting	Tonight
Alternatives Development	Winter 2013
Public Meeting #2 – Alternatives Review	Spring 2013
Impact Assessment	Spring 2013
Release Environmental Assessment for Public Comments	Spring 2013
Public/Agency Review Period of Environmental Assessment	Spring 2013
Public Meeting #3 - Public Hearing for the Environmental Assessment	Summer 2013
Final NEPA Document and Decision	Summer 2013

Stay Involved

- Tell Us What You Think
 - Tonight
 - Fill out Comment Form
 - Get on Email Distribution List
 - www.anacostiawaterfront.org/Penn-Potomac
 - Email
 - pennpotomac@prrbiz.com



QUESTIONS?